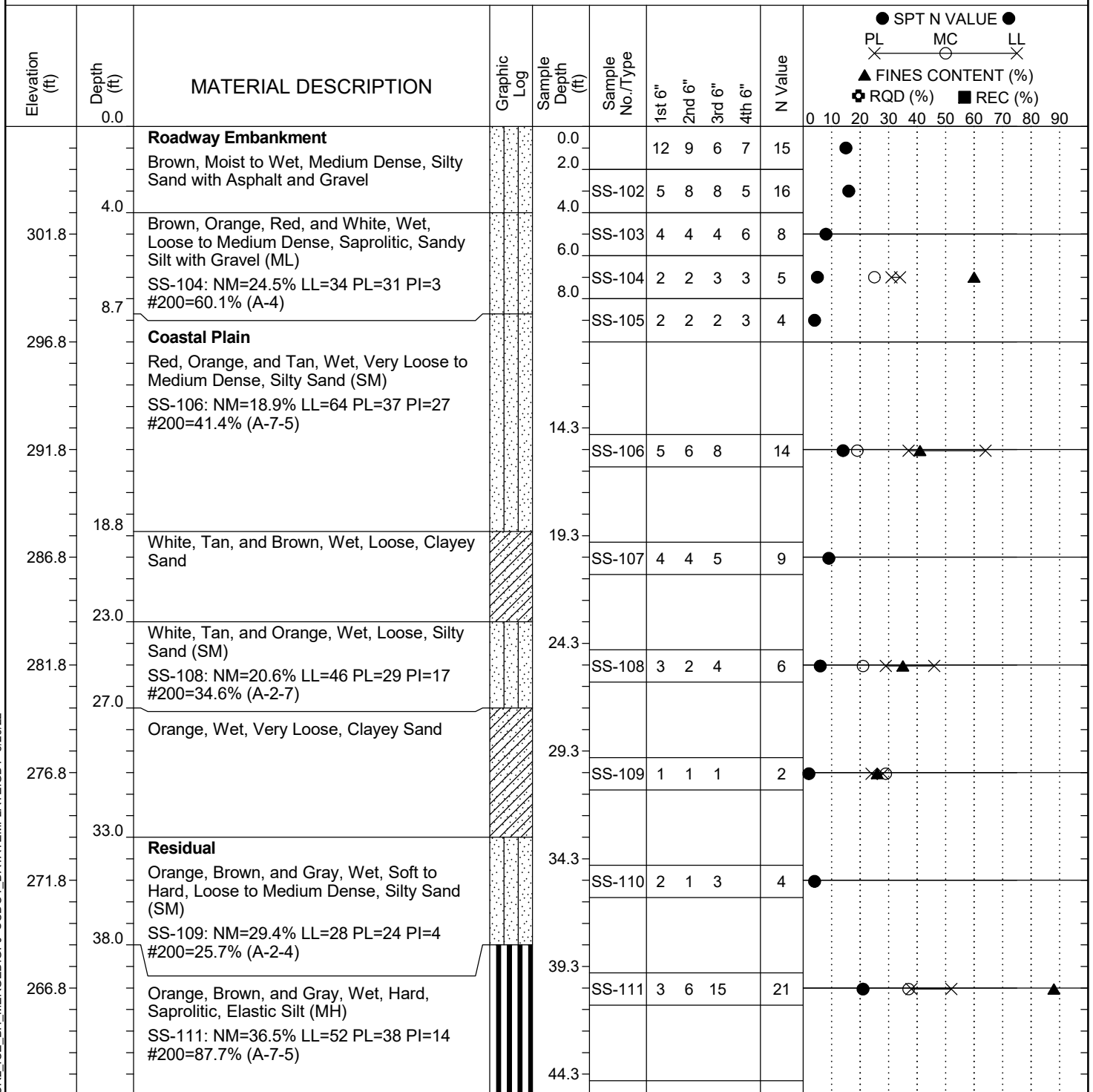


Project ID:	P039719	County:	Richland	Boring No.:	G-117
Site Description:	Carolina Crossroads Phase 2			Route:	Ramp
Eng./Geo.:	C. McIlroy	Boring Location:	395+25	Offset:	20 RT
Elev.:	306.8 ft	Latitude:	34.03905087	Longitude:	-81.09612992
Total Depth:	70.1 ft	Soil Depth:	70.1 ft	Date Started:	3/10/2022
Core Depth:	N/A ft	Date Completed:	3/10/2022		
Bore Hole Diameter (in):	2.25	Sampler Configuration		Liner Required:	Y (N)
Drill Machine:	D-50 #435	Drill Method:	RW	Energy Ratio:	84.4%
Core Size:	N/A	Driller:	M. Morgan	Groundwater:	TOB N/A
				24HR	Cave @ 7'



LEGEND

Continued Next Page

SAMPLER TYPE		DRILLING METHOD	
SS - Split Spoon	NQ - Rock Core, 1-7/8"	HSA - Hollow Stem Auger	RW - Rotary Wash
UD - Undisturbed Sample	CU - Cuttings	CFA - Continuous Flight Augers	RC - Rock Core
AWG - Rock Core, 1-1/8"	CT - Continuous Tube	DC - Driving Casing	